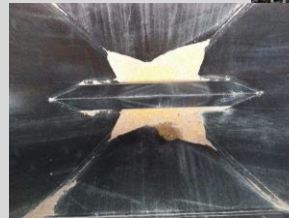


**Tealinc, Ltd. Is Proud To Provide Freight Cars for Your Shipping Needs**

**Covered Hoppers #C601113**

*\*All dimensions listed herein are approximate values, please refer to UMLER for exact dimensions.*

Reference Number	C601113
Car Type	Covered Hoppers
Cube	4750 Cube
AAR Car Type Code	C113
Mech. Designation	LO
Built Date / Builder	1977-1981
Interchange Thru...	2027-2031
Plate Clearance	B
Outside Length	60' 00"
Outside Ext. Height	15' 01"
Outside Ext. Width	10' 08"
Approx. Tare Weight	60,300 lbs.
Approx. Load Limit	202,700 lbs.
Gross Weight on Rail	263,000 lbs.
Last Commodity	
Lining	Unlined
Gates	Three (3) Gravity Gates
Compartments	3
Hatches	1-Trough Hatch in Roof




**Contact Tealinc to Learn More:**


Julie Mink | 720-733-9922 | [Julie@tealinc.com](mailto:Julie@tealinc.com)  
 Kristen Kempson | 708-854-6307 | [Kristen@tealinc.com](mailto:Kristen@tealinc.com)

Tealinc, Ltd. is dedicated to creating value for our customers. We specialize in Rail Transportation Solutions by buying, selling, leasing, consulting and managing rolling stock fleets and locomotive assets with our customers' long term and short-term requirements in mind. We participate in nearly every industry supported by rail; sell, lease and purchase nearly every type of freight railcar, and provide management and consulting services to both novice and experienced rail shippers.


*We look forward to earning your business!*




Specializing in Rail Transportation Solutions



**Railcar & Locomotive Leasing and Brokerage**



**Project Management**



**Transportation Consulting**

Tealinc, Ltd. | 1606 Rosebud Creek Road | Forsyth, MT 59327

Specializing in Rail Transportation Solutions for Customers in North America and Around the World

[www.tealinc.com](http://www.tealinc.com)